



PREMIUM IRRIGATED PASTURE MIX

A mixture of perennial, cool season grasses with production in mind. These grasses are high yielding and fast growing especially in spring and fall. Use this mix where water is limited because it includes hardy, drought tolerant grasses. Grows 3-5 feet at full potential. For new seeding broadcast at 20-25Lbs./acre, Drilled at 15-20Lbs./acre. For over-seeding broadcast at 10-15Lbs./acre, drilled at 5-10Lbs./acre.

MIX CONTAINS:

25% Elite Tetraploid Perennial Rye

Bunchgrass with germination in 5-10 days. One of the most widely used grasses and is adaptable to a wide variety of soils and climate conditions. A leafy pasture type perennial rye.

25% Potomac Orchardgrass

Bunchgrass with germination in 14-21 days. One of the earliest species to exhibit growth in the spring, making tremendous forage potential under cooler conditions. Performs well on different textured soils. Found throughout the west, this grass is great forage and hay producer.

20% Improved Meadow Brome

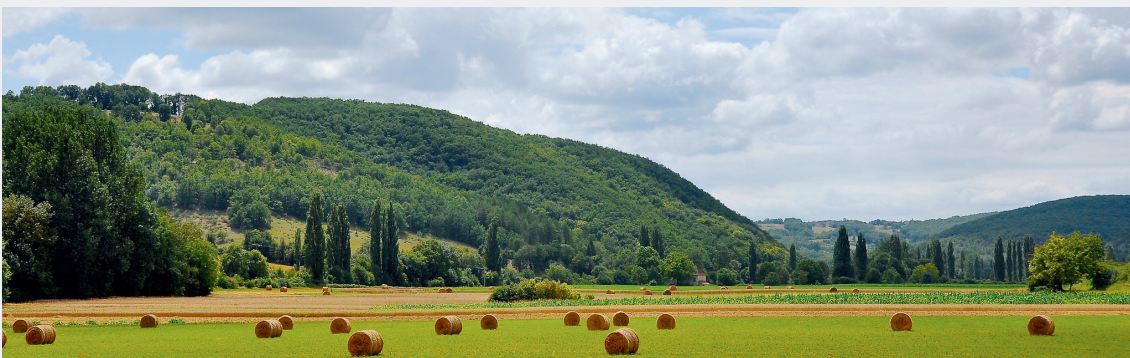
Bunchgrass with germination in 10-14 days. Meadow Brome is a long-lived perennial that is slow to establish. It is very palatable and highly productive.

15% Crown Royale Orchardgrass

Bunchgrass with germination in 14-21 days. Similar to Potomac, but with a later maturity date.

15% Manchar Smooth Bromegrass

Sod-forming grass with germination in 10-14 days. Smooth bromegrass is resistant to drought and extremes in temperature. It is the most widely used of the cultivated brome grasses. Grows throughout most of the US.



4300 Monaco Street
Denver CO 80126
303-320-7500
www.avseeds.com